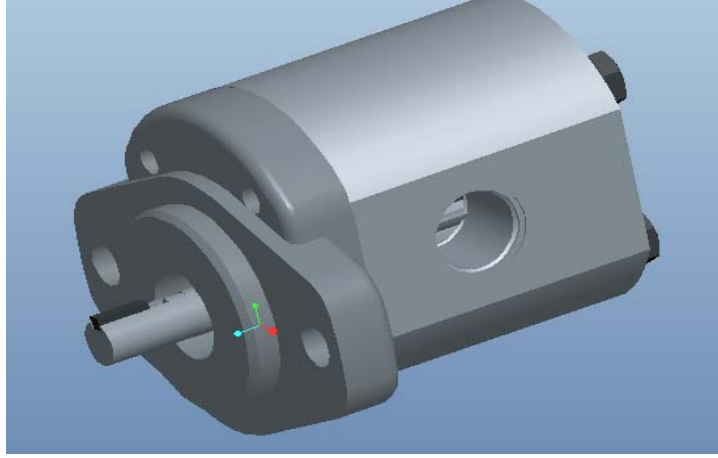


Salient Features



The Value Engineered Little Master (LM) Series of Dynamatic® Gear Pumps, have been designed to specifically meet the demanding needs of modern high performance hydraulic systems. The 1DX series has optimized twelve teeth gears. They offer high-pressure rating, combined with low pressure-ripples and low-noise characteristics. The extensive range of displacements available provides close matching for a wide variety of applications.

The Salient features of the 1DX Series of pumps are detailed below.

- Eleven-teeth gear design.
- Low pressure-ripple / system noise.
- Rear Cover mounted & Front Flange mounted ports configuration available.

Pump Sizes: The LM Series of Pumps are available in sizes ranging from 0.8 to 3.2 cc per rev.

Pressure Capability : The LM Series of pumps have capability to withstand a maximum continuous operating pressure of 170 bar, to meet exacting requirements.

Application : This pump is primarily intended for Pump-Mptor application wherein the application demands low oil flow to be capable of withstanding moderate pressure.

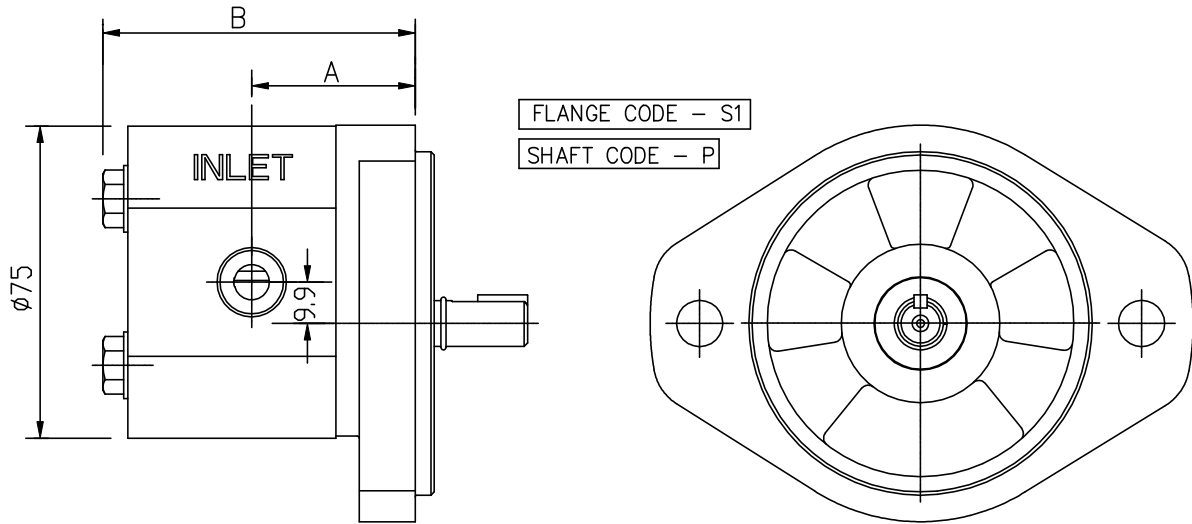
Options: The LM Series includes various shaft types viz. parallel, tung drive, etc. Also, various types of mounting flanges are available which provide optimum flexibility in

connecting to the power source of the equipment. Various pump port options are available to facilitate pump fitment requirement.

Salient Features :

- a) Compact
- b) Light Weight
- c) Low Noise due to higher no. of gear teeth

INSTALATION DIMENSIONS

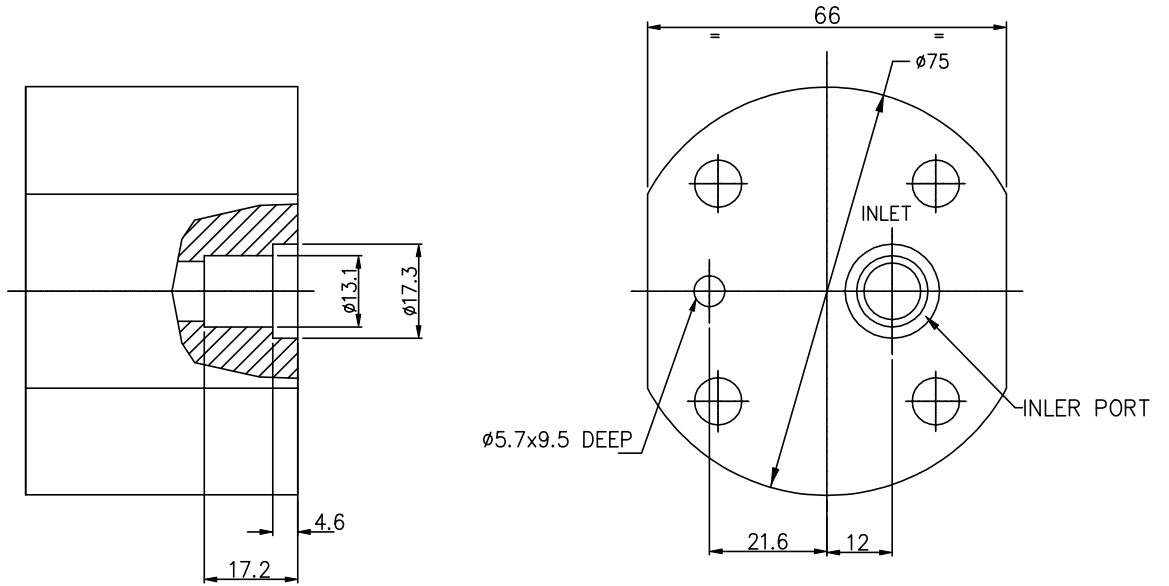


FLANGE CODE - S1

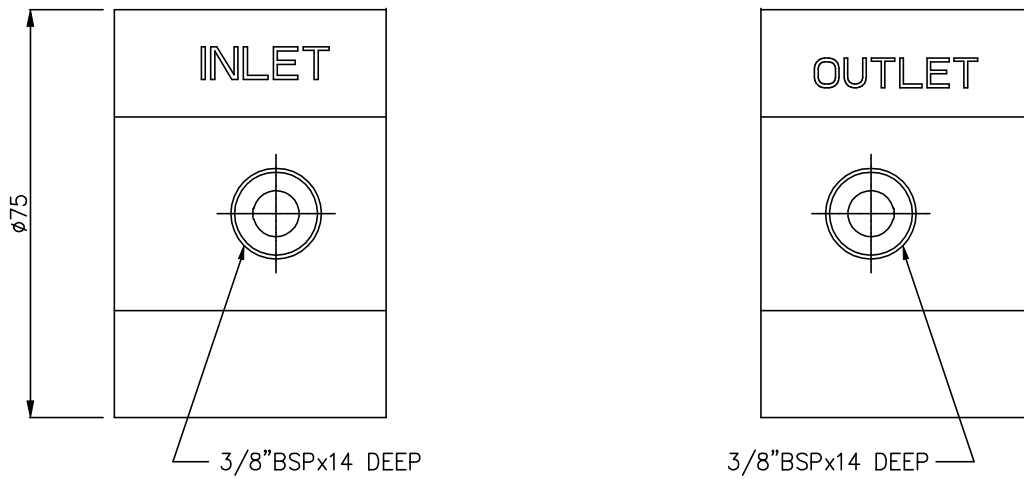
PERFORMANCE DATA							
PUMP TYPE	DISPLACEMENT	DIM-A	DIM-B	MAX. WORKING PRESSURE (bar)	MAX. PEAK PRESSURE (bar)	Min. Speed @ Max. Working Pressure rev/min.	Max. Speed @ Max. Working Pressure rev/min.
	cc/rev						
LM 008	0.8	37.5	71.5	140	170	700	2200
LM 012	1.2	38.4	73.2	140	170	700	2200
LM 016	1.6	39.3	75	140	170	700	2200
LM 022	2.2	40.7	77.8	140	170	700	2200
LM 029	2.9	42.1	80.7	140	170	700	2200
LM 032	3.2	42.7	81.9	140	170	700	2200

ALL DIMENSIONS ARE IN MM UNLESS OTHERWISE SPECIFIED

BODY PORT CODE – K
(USE ONLY FLANGE CODE–K)

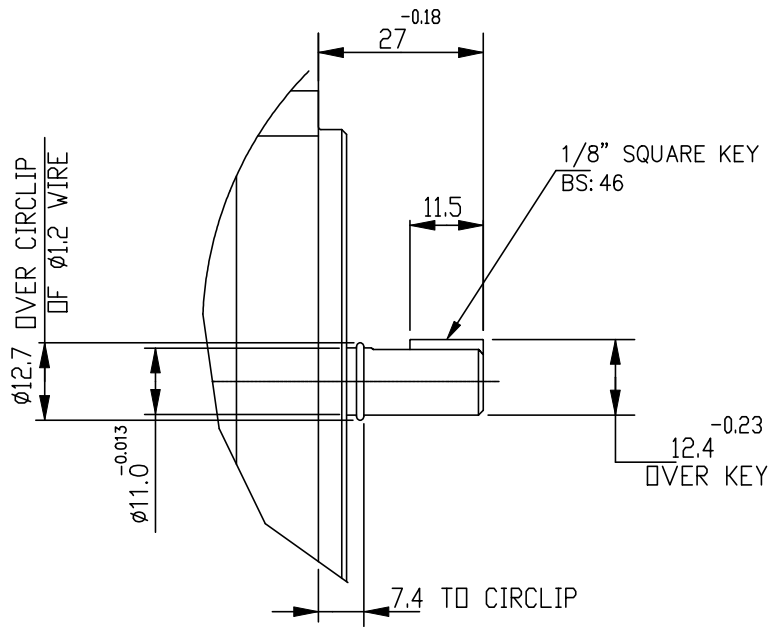


BODY PORT CODE – T
(USE FLANGE CODE–S & S1)

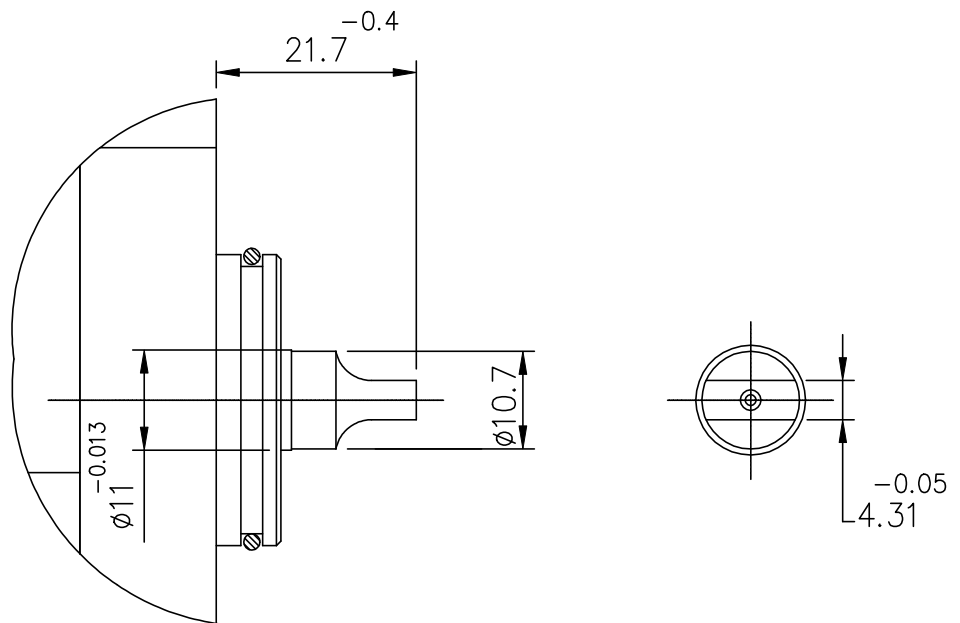


ALL DIMENSIONS ARE IN MM UNLESS OTHERWISE SPECIFIED

DRIVE SHAFT CODE-P
 FLANGE CODE - S & S1

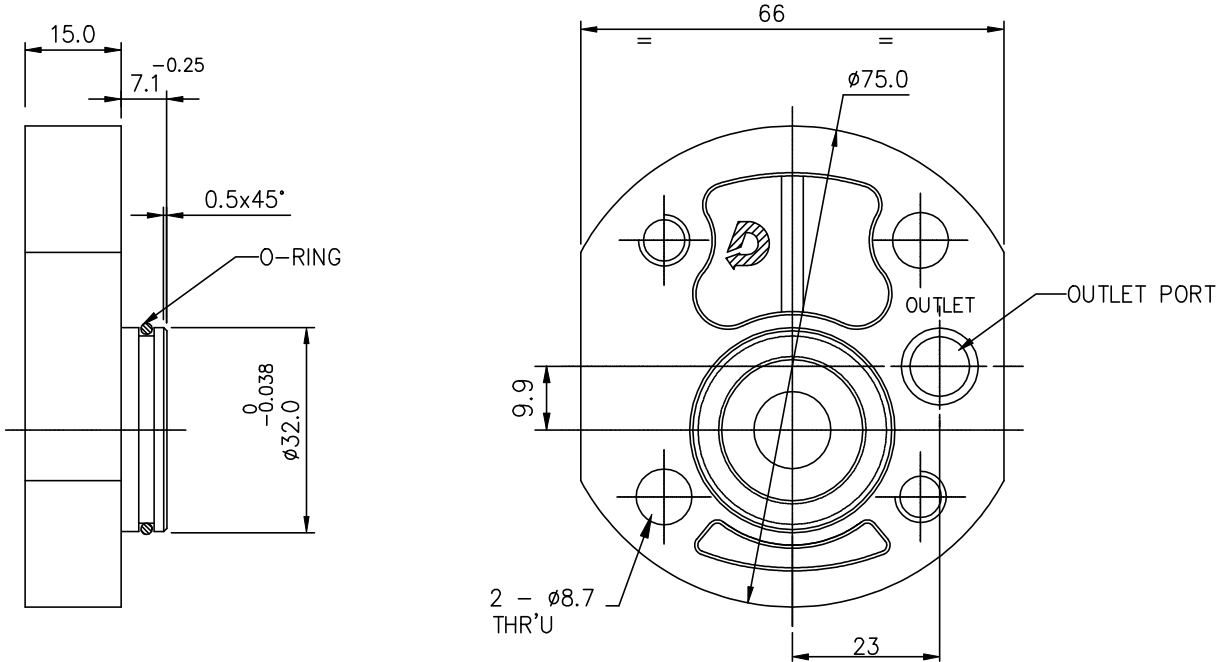


DRIVE SHAFT CODE - E (TUNG)
 FLANGE CCDE - K

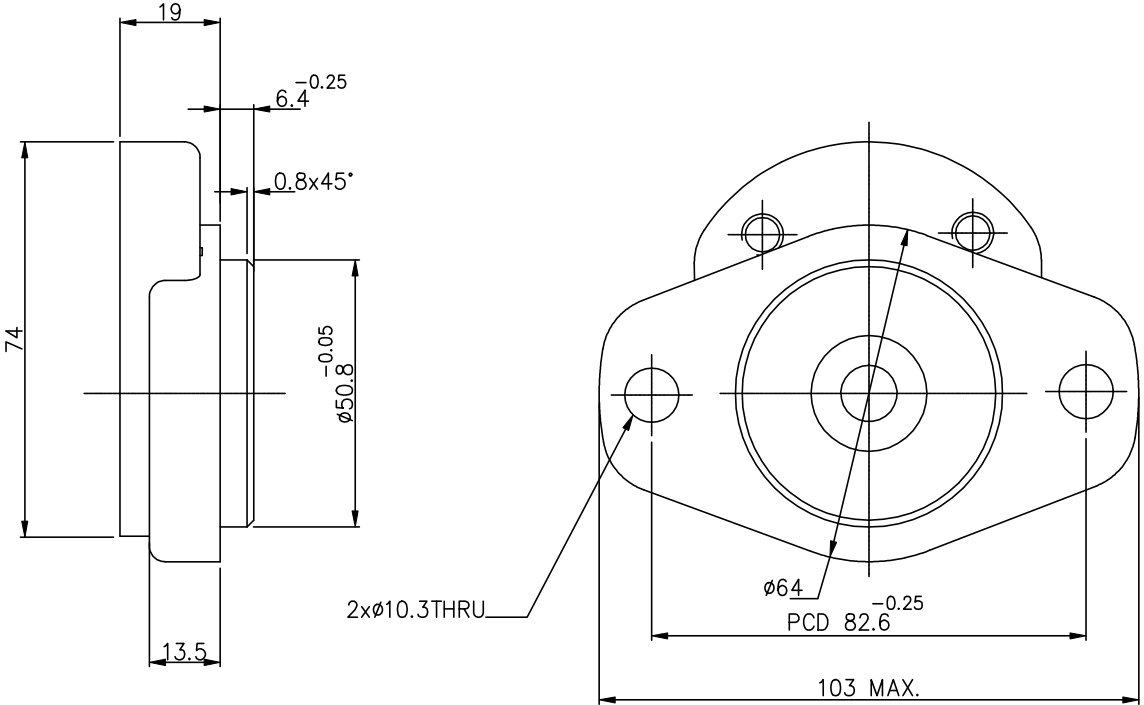


ALL DIMENSIONS ARE IN MM UNLESS OTHERWISE SPECIFIED

MOUNTING FLANGE CODE - K
2 BOLT MOUNTING

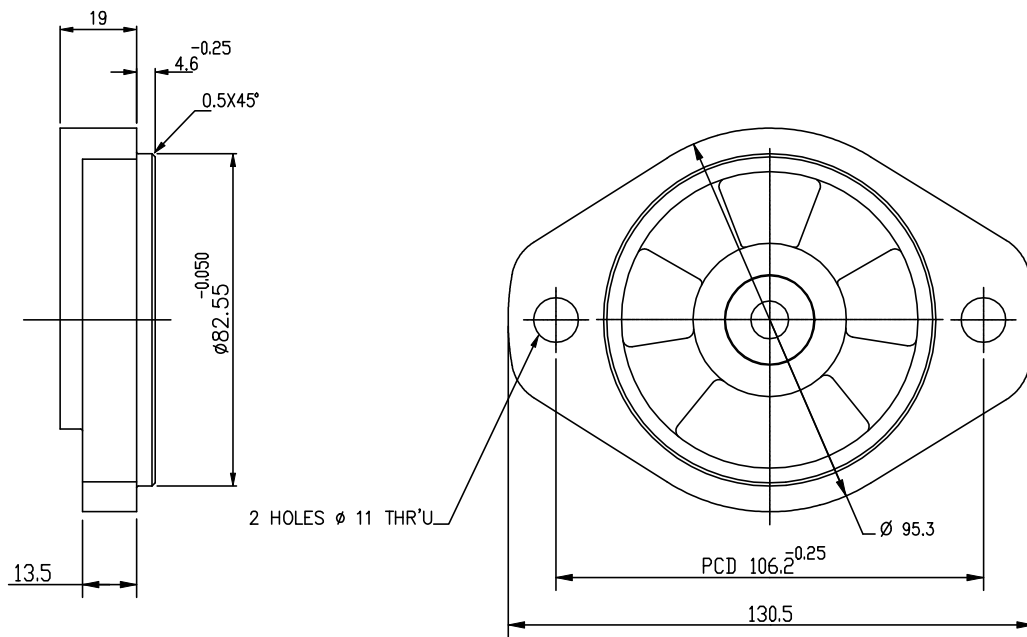


MOUNTING FLANGE CODE - S
SAE 2 BOLT MOUNTING



ALL DIMENSIONS ARE IN MM UNLESS OTHERWISE SPECIFIED

MOUNTING FLANGE CODE-S1



ALL DIMENSIONS ARE IN MM UNLESS OTHERWISE SPECIFIED