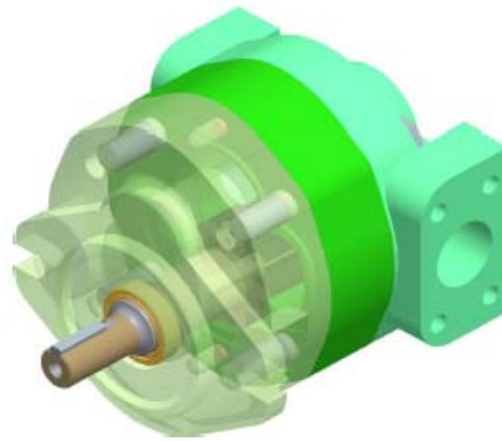


# Dynamatic Technologies Ltd® HIGH PRESSURE - XT Series

## Hydraulic Gear Pump

### Salient Features



Dynamatic Technologies Limited, the largest producer of hydraulic gear pumps in Asia and one of the top five world-wide, introduces the XT Series of Pumps. The XT Series of Pumps has been developed to meet the demanding work environments of earth-moving applications.

The Salient features of the XT Series of Pumps are detailed below.

**Pumps Sizes:** The XT Series of Pumps are available in sizes ranging from 30 to 100 cc per rev.

**High Grade Cast Iron:** to meet the high performance requirements of your application, high grade cast iron is used as pump body, flange and cover material. Self-lubricating, PTFE lined bushes are used, to ensure:

- Low coefficient of friction
- Good sliding characteristics
- Suitability for dry running
- High chemical resistance
- Long life and minimal maintenance

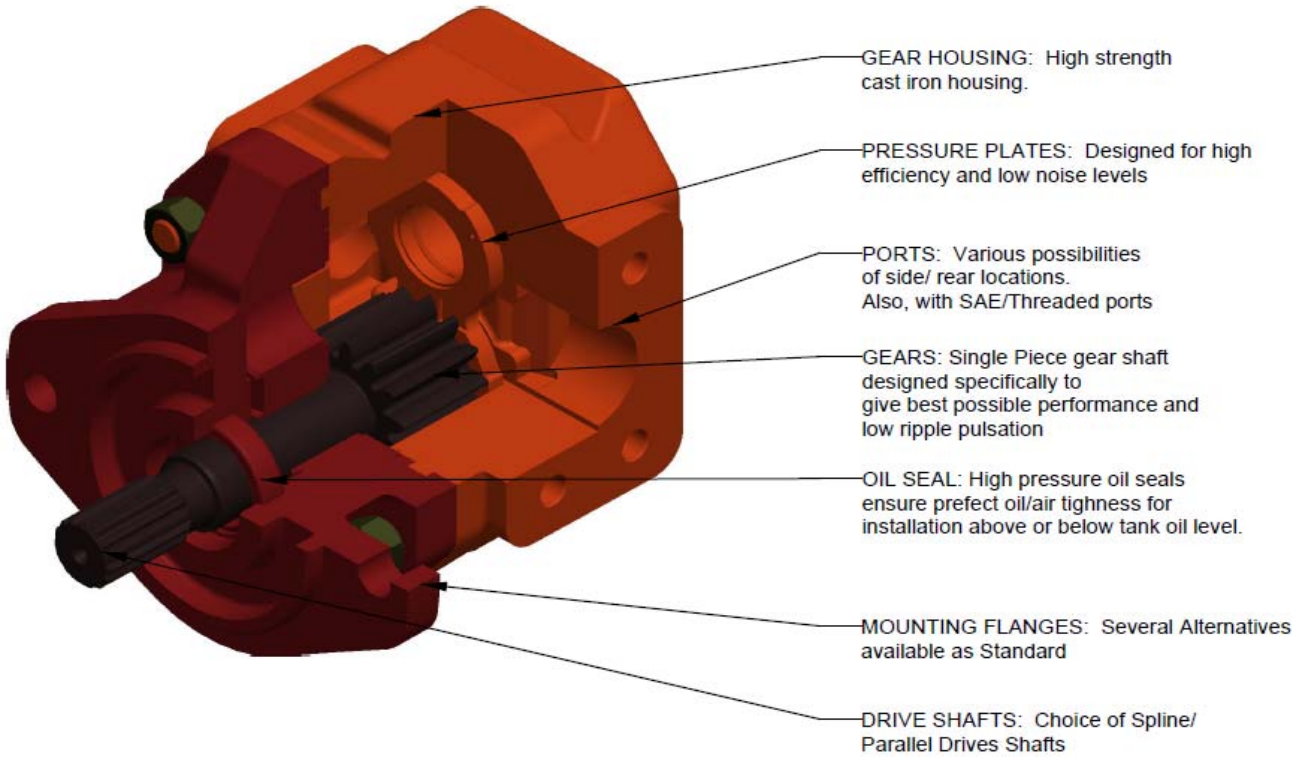
**High Pressures:** The XT Series of Pumps have capabilities to withstand maximum operating pressures of 225 Bar, to meet your exacting requirements.

**Quality:** The use of statistical process control techniques during all phases of manufacturing ensures the use of high quality components. All pumps in the XT Series are performance tested to achieve total quality.

**Options:** The options in the XT Series include two different shaft types viz. parallel and Spline and various types of mounting flanges, which provide optimum flexibility in connecting to power source of your equipment. Also, the pump can be built of either 2 OR 3 sections depending upon the space availability, port configuration, etc.



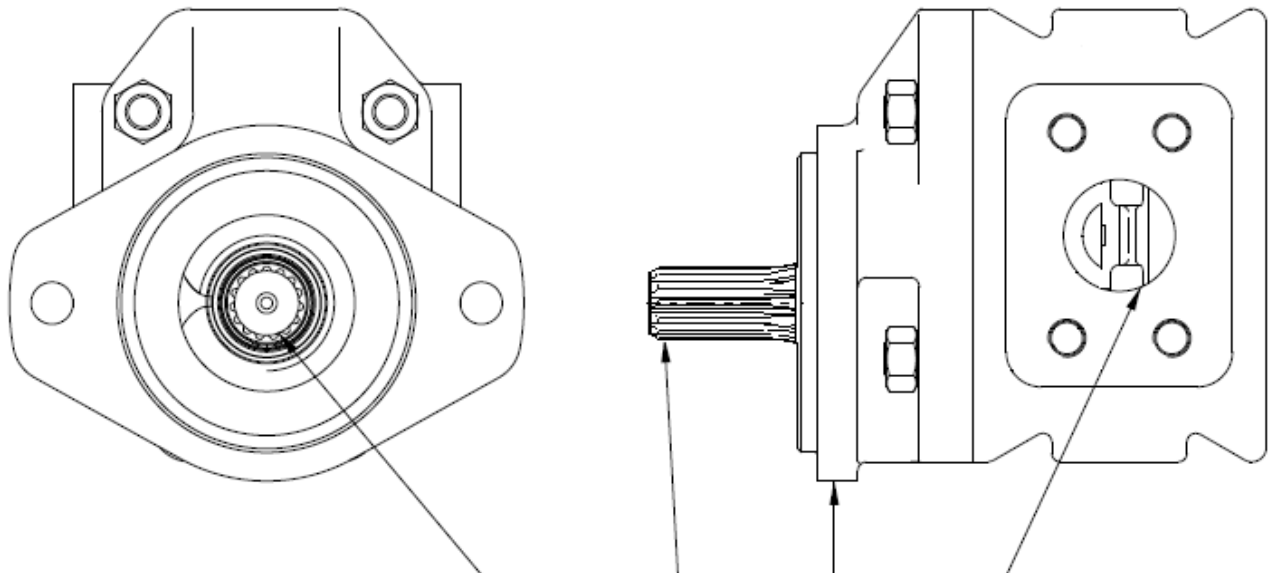
Pump Construction:



Construction	External Gear Type Pump
Mounting	SAE Flange
Port Connections	Threaded and Flange Type
Direction of Rotation	Anti-Clockwise/ Clockwise
Inlet Pressure Range	0.02Bar
Fluid Temperature Range	-20 to 70 Deg
Fluid	Mineral Oil Based, Fire Resistant Hydraulic Fluid to ISO/DIN Std.
Viscosity Range	10-100 Cst
Filtration Requirement	NAS 1638 – Level 8



MODEL	DISPL.IN CC/REV	MAXIMUM FLOW IN Ltr/Min @1500 RPM	RPM		MAX. CONT PRESSURE (BAR)	MAX. PEAK PRESSURE (BAR)
			Min.	Max.		
XT 30	30	45	650	3000	225	260
XT 40	40	60	650	3000	225	260
XT 45	45	67.5	650	3000	225	260
XT 50	50	75	650	3000	225	260
XT 55	55	82.5	650	3000	225	260
XT 65	65	97.5	600	2500	215	245
XT 70	70	105	600	2500	215	245
XT 85	85	127.5	600	2500	215	245
XT 100	100	150	600	2500	215	245



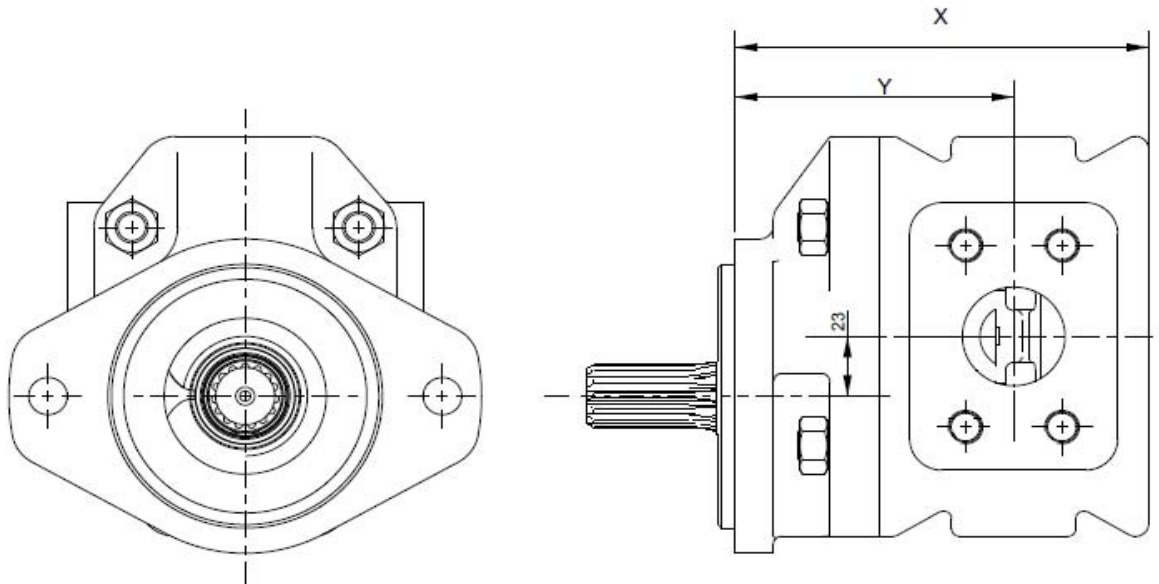
Frame	Flow Size	Rotation	Shaft	Flange	Port Code
XT	--- (CC)	---	---	---	---

Flow	Rotation	Shaft Code	Flange Code	Port Code
30	A Anti-clock Wise	P Parallel Shaft	S 2 Bolts,SAE Mounting Type	Split Flange Port
40				
45	C Clock Wise	S Spline Shaft	D 4 Bolts,SAE Mounting Type	Straight Threaded Port
50				
55				
65				
70				
85	Pipe Threaded Port			
100				

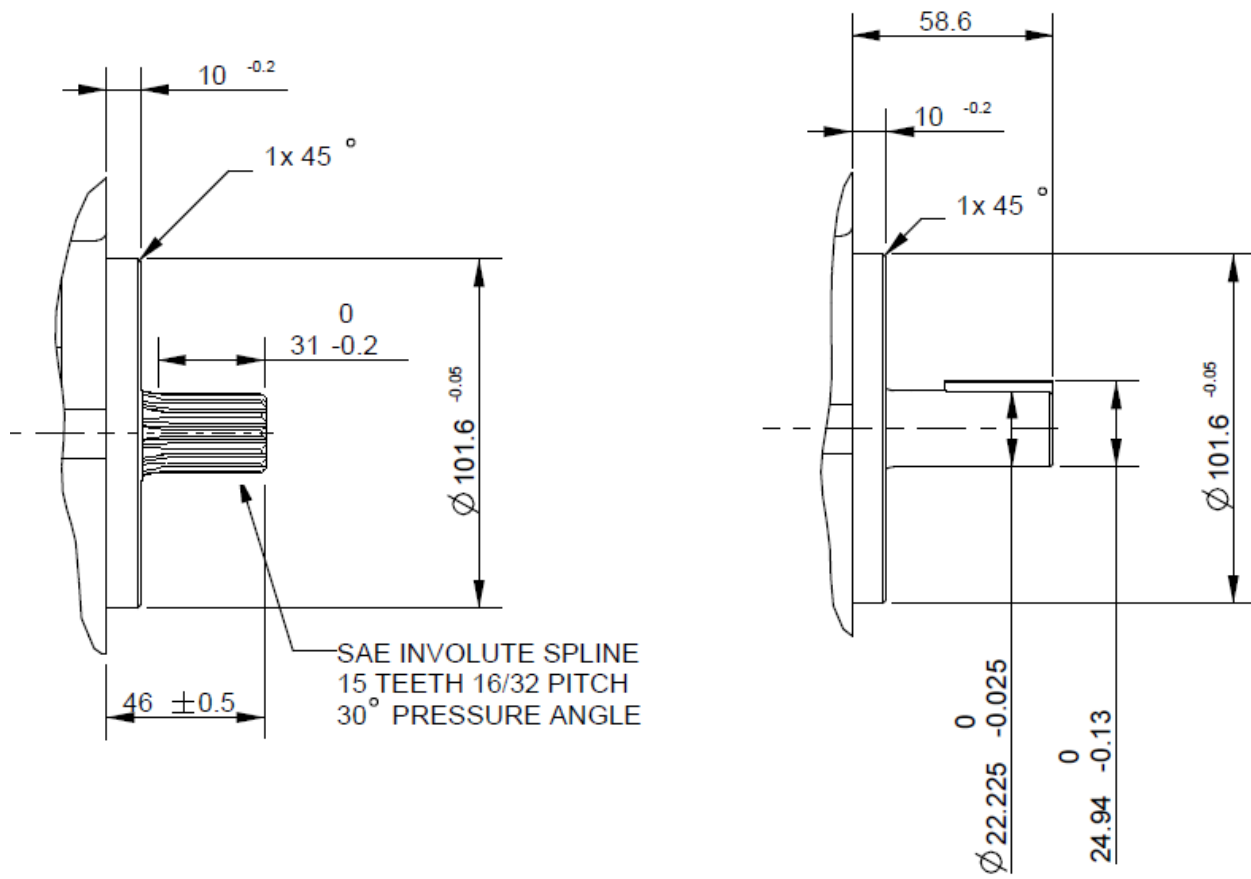


Pump installation dimensions:

XT Series



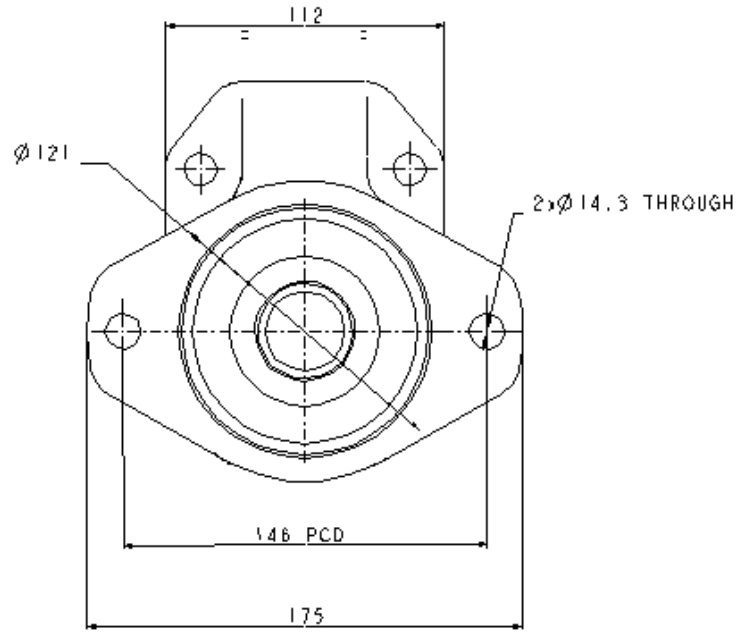
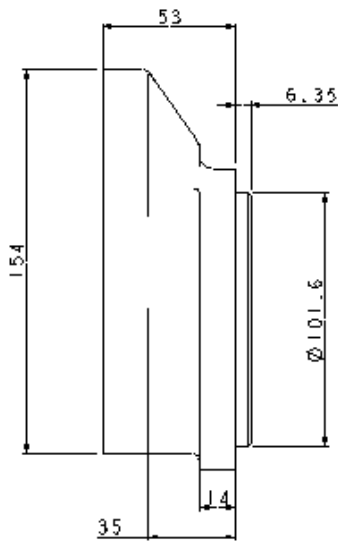
Model	Dimension 'X'	Dimension 'Y'
XT 30	84.9	68.8
XT 40	91.2	72.1
XT 45	93.8	73.4
XT 50	96.4	74.7
XT 55	100.2	76.6
XT 65	107.0	80.0
XT 70	110.3	81.6
XT 85	119.8	86.4
XT 100	129.3	91.2



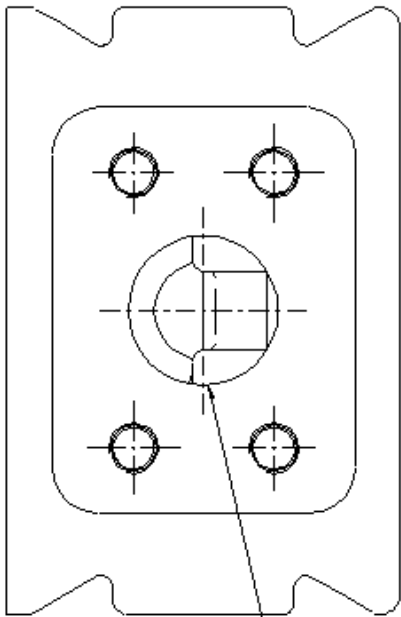


Flange Configuration:

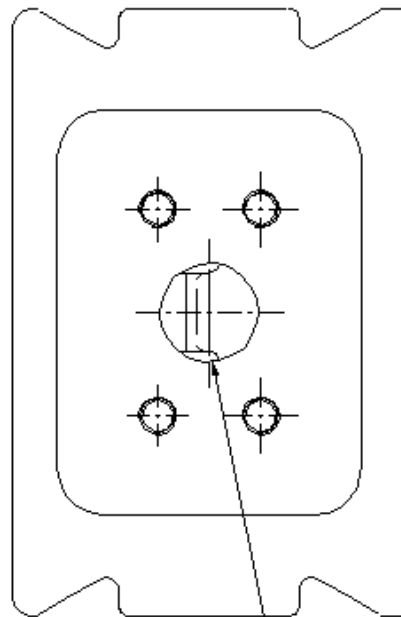
XT Series



*All dimensions are in mm unless otherwise specified*



INLET PORT



OUTLET PORT





All dimensions are in mm unless otherwise specified

### CODE-S: Split Flange Port

